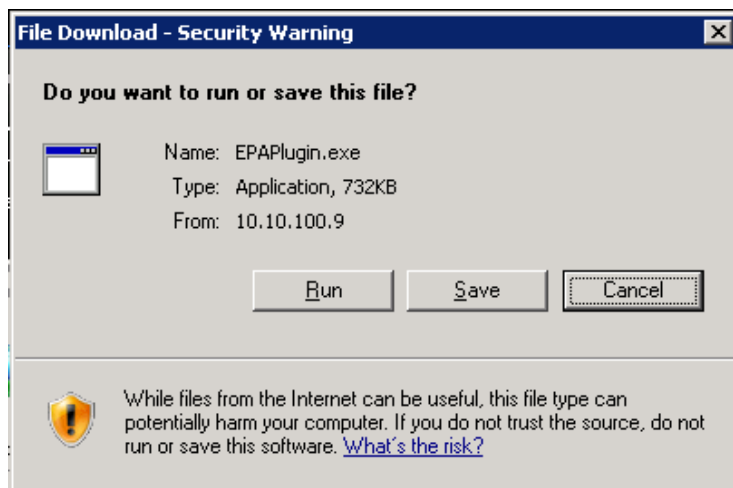


The updated Citrix portal requires a new version of the *Citrix Endpoint Analysis Plugin* to be installed on the client computer. To install the new plugin on your computer, please refer to the instructions below:

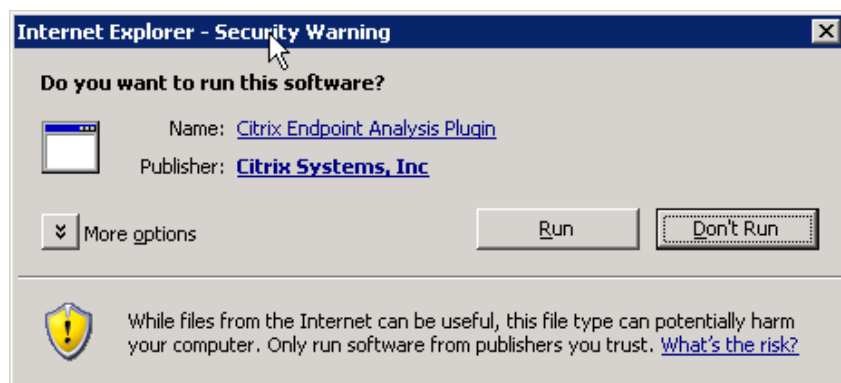
1. Download the client



2. Run the downloaded file



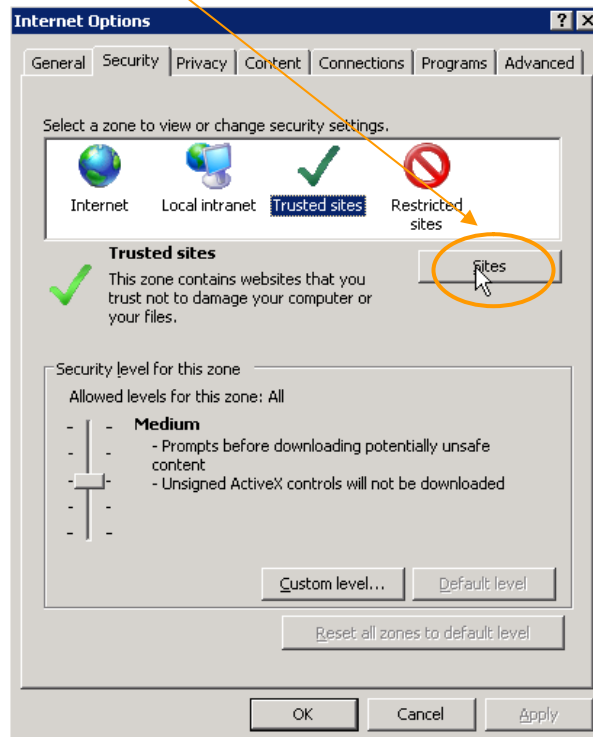
3. Confirm the security warning



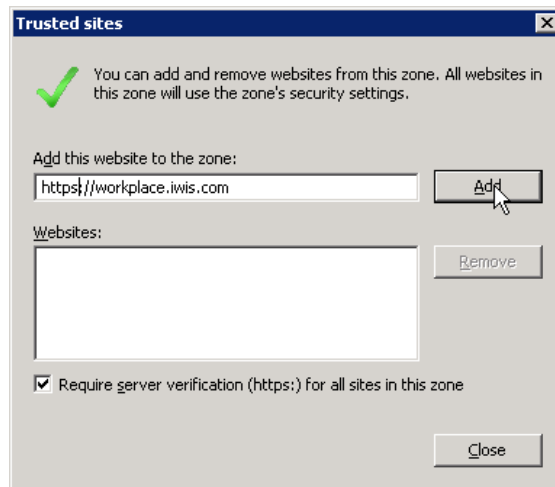
- At first run of the scan you can choose to run the scan without being prompted again. Click "Always" to do so.



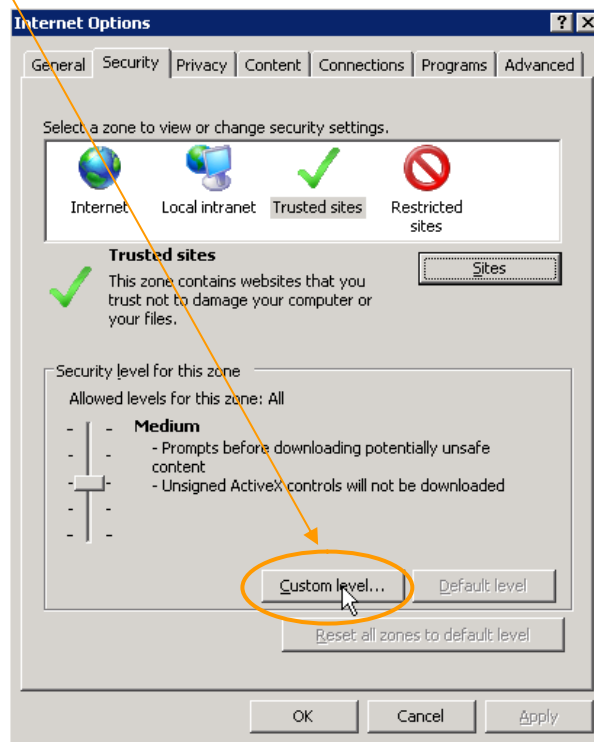
- If you are experiencing problems with the installation / run of the plugin, please go to the Internet Explorer settings (*Tools > Internet options*)
- In the *Security* tab choose "Sites"



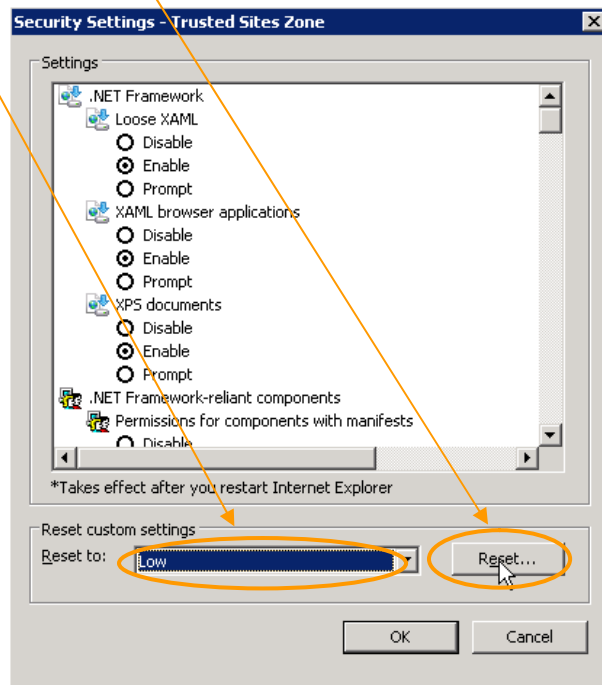
7. Click "Add" and close the window



8. Click "Custom level"



9. Choose "Low" and click "Reset"



You can change the security settings back to medium after successful installation of the plugin.